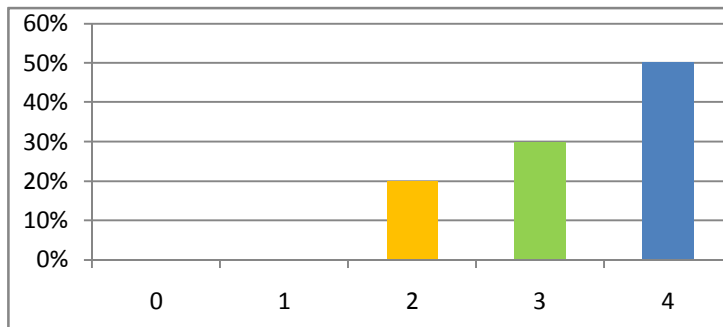


SARASWATI DENTAL COLLEGE, HOSPITAL
Student Satisfaction Survey
(Teaching Learning and Evaluation Process)

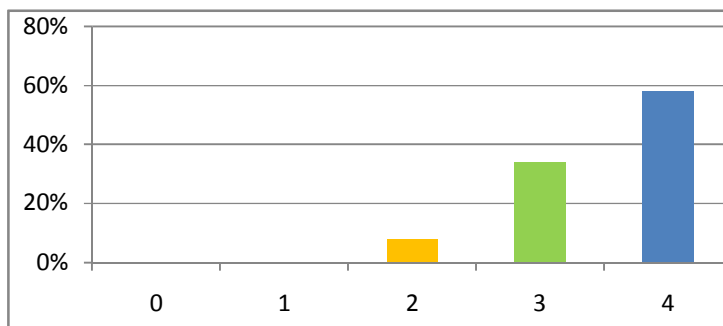
1. How much of the curricula and syllabi are covered in the Discipline in which you are studying?
- 4 – 90 to 100%
 - 3 – 75 to 89%
 - 2 – 55 to 74%
 - 1 – 30 to 54%
 - 0 – Below 30%

Results are as follows:



2. What categories of teachers are involved in the theory and practical classes in your discipline?
- 4 – Professors, Associate Professors, Assistant Professors and Others (Lecturers, Tutors, Demonstrators and Residents)
 - 3 – Associate Professors, Assistant Professors and others
 - 2 – Assistant Professors and others
 - 1 – Others
 - 0 – None of the above

Results are as follows:



3. What percentage of teachers is effectively communicating domain knowledge using IT skills and Soft Skills in the Teaching Learning Process?

4 – 90 to 100%

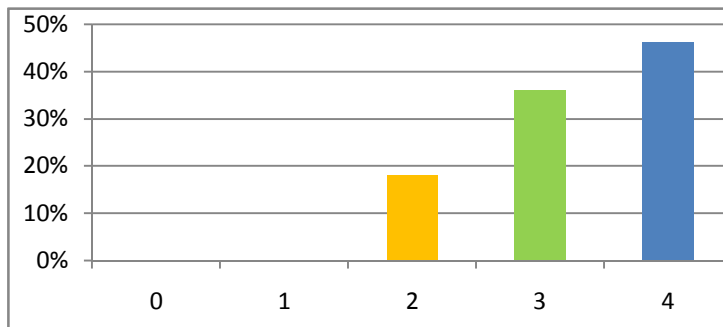
3 – 75 to 89%

2 – 55 to 74%

1 – 30 to 54%

0 – Below 30%

Results are as follows:



4. What percentage of the teachers build-up the expected curricular competencies, programme outcomes and course outcomes in you?

4 – 90 to 100%

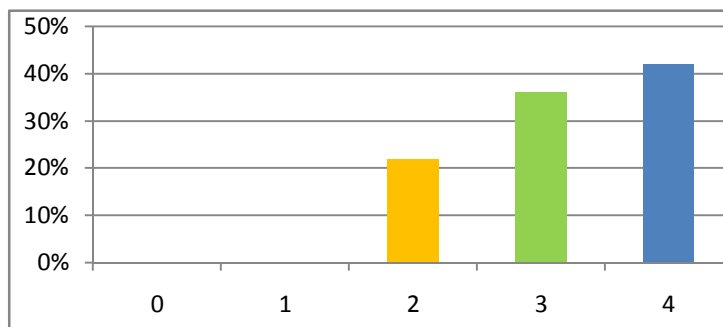
3 – 75 to 89%

2 – 55 to 74%

1 – 30 to 54%

0 – Below 30%

Results are as follows:



5. Does your mentor follow up necessarily on the tasks assigned to you?

4 – Every time

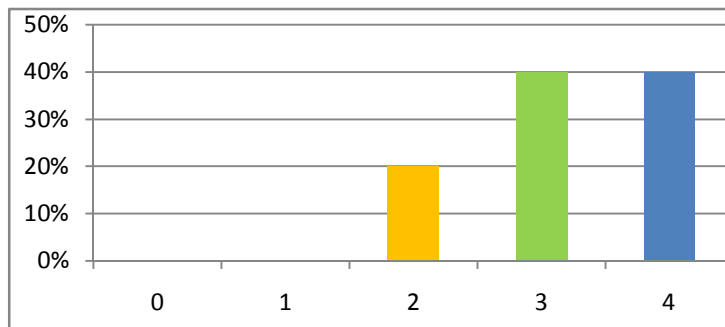
3 – Usually

2 – Occasionally

1 – Rarely

0 – I don't have a mentor

Results are as follows:



6. To what extent is the mentoring process in your institution beneficial to you for academic, social and personality growth?

4 – Highly Beneficial

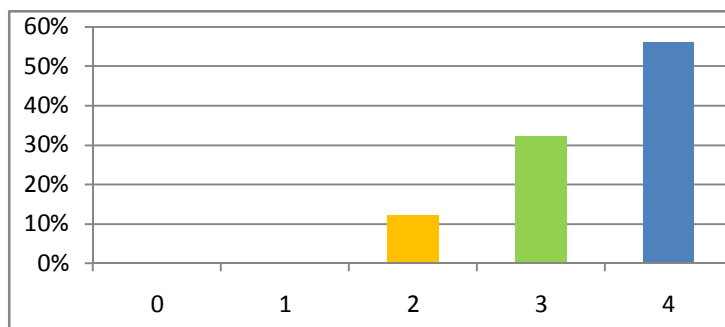
3 – Beneficial

2 – Satisfactory

1 – Marginally

0 – Not at all

Results are as follows:



7. To what extent clinical and practical facilities related to your discipline have been made available to you?

4 – 90 to 100%

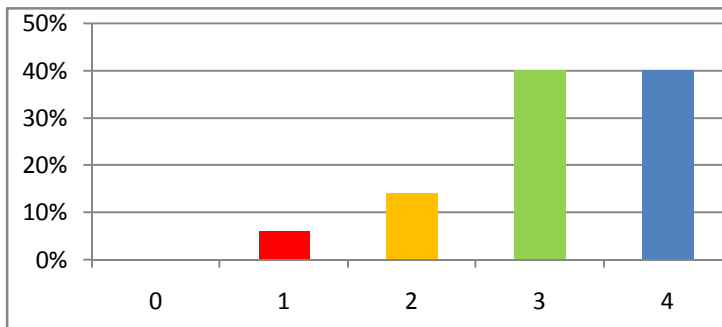
3 – 75 to 89%

2 – 55 to 74%

1 – 30 to 54%

0 – Below 30%

Results are as follows:



8. What extent of training are you provided with, in the skill and simulation labs, clinical ward rounds / rotations and lab exercises related to your discipline?

4 – 90 to 100%

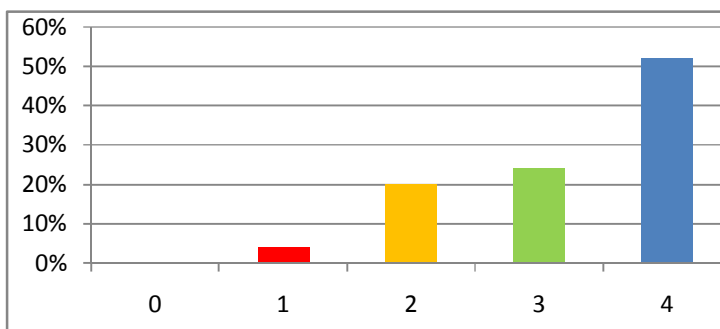
3 – 75 to 89%

2 – 55 to 74%

1 – 30 to 54%

0 – Below 30%

Results are as follows:



9. What percentage of teachers use ICT-enabled methods like multimedia, web-based learning and national e-resources while teaching?

4 – 90 to 100%

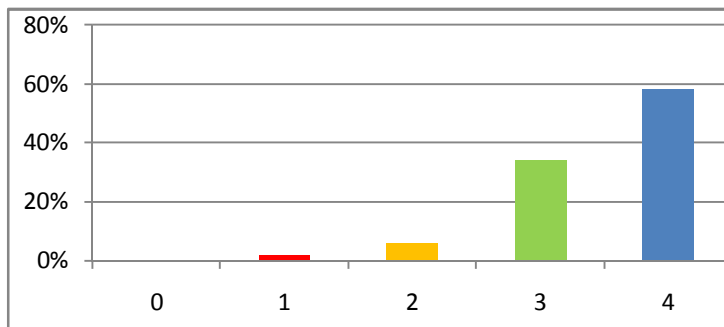
3 – 75 to 89%

2 – 55 to 74%

1 – 30 to 54%

0 – Below 30%

Results are as follows:



10. What is the extent of opportunities given to you for outdoor learning like internship, student exchanges, field visits and projects?

4 – All of the above

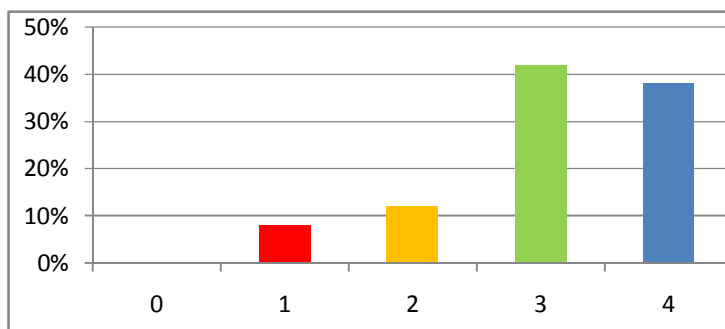
3 – Three of the above

2 – Two of the above

1 – One of the above

0 – None of the above

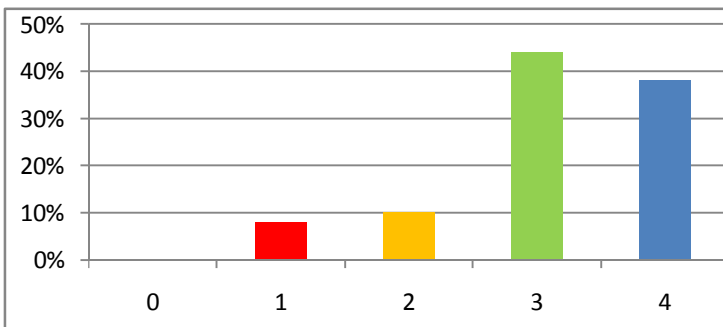
Results are as follows:



11. Does the institution provide the opportunities for experiential learning, including problem-based learning, case-based learning, evidence-based learning, competency building, seminars, group discussions, to enhance knowledge and skills in your discipline?

- 4 – All of the above
- 3 – Any four of the above
- 2 – Any three of the above
- 1 – Any two of the above
- 0 – Any one of the above

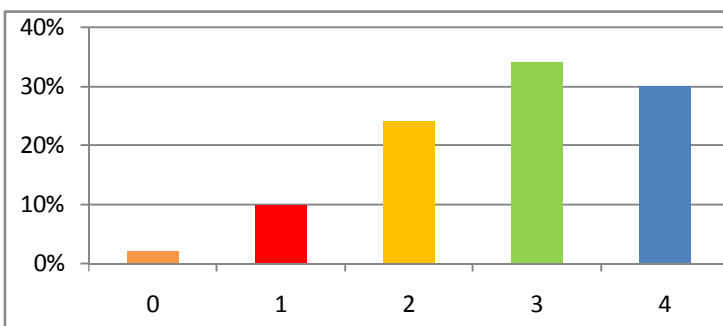
Results are as follows:



12. What is the level of opportunities provided by your institution to develop employability and entrepreneurship skills to prepare you for your career?

- 4 – High Level
- 3 – Appreciable Level
- 2 – Satisfactory Level
- 1 – Marginal Level
- 0 – No opportunity given

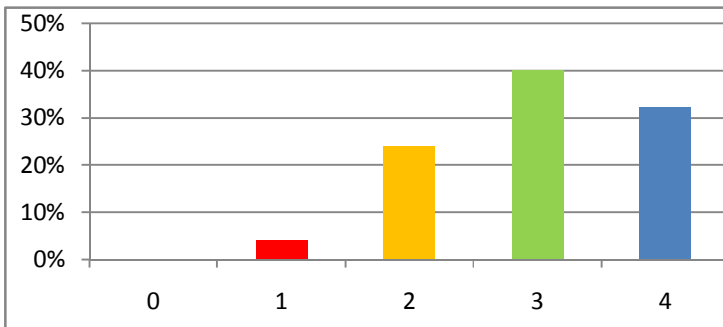
Results are as follows:



13. What is the level of value-added courses / training given by your institution in the area of professional ethics and values, community service, preventive health care and rural health care?

- 4 – High Level
- 3 – Appreciable Level
- 2 – Satisfactory Level
- 1 – Marginal Level
- 0 – No opportunity given

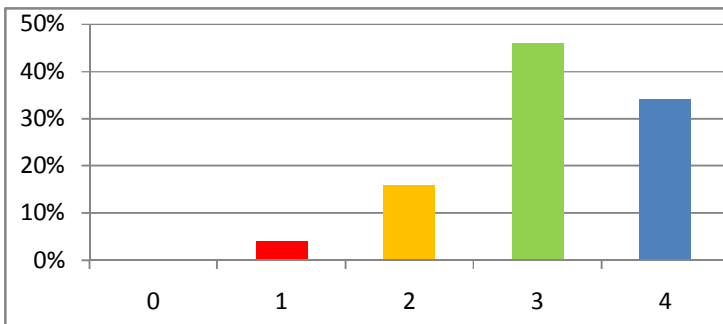
Results are as follows:



14. What level of monitoring and evaluation is available in your institution for assessing the effectiveness and interactivity of the classroom proceedings/learning sessions?

- 4 – High Level
- 3 – Appreciable Level
- 2 – Satisfactory Level
- 1 – Marginal Level
- 0 – No opportunity given

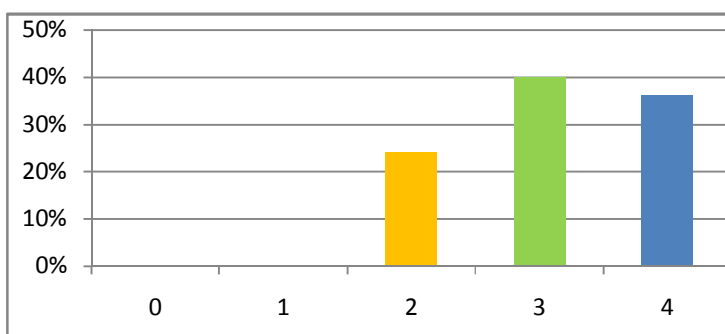
Results are as follows:



15. To what extent the institutional ambience and class room teaching has improved your creative thinking and analytical skills?

- 4 – High Level
- 3 – Appreciable Level
- 2 – Satisfactory Level
- 1 – Marginal Level
- 0 – No opportunity given

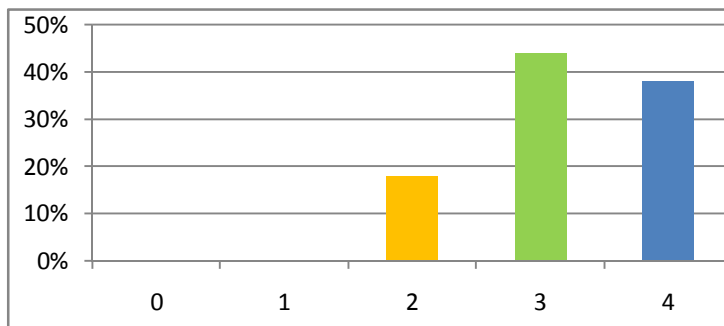
Results are as follows:



16. How frequently your performance in academic assignments are discussed and reviewed with you by the teachers?

- 4 – Regularly
- 3 – Often
- 2 – Sometimes
- 1 – Rarely
- 0 – Never

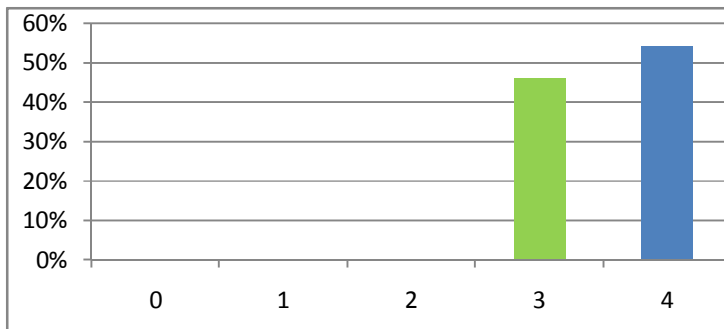
Results are as follows:



17. What is your assessment about the fairness of the internal evaluation process adopted by the teachers?

- 4 – Always fair
- 3 – More often fair
- 2 – Sometimes fair
- 1 – Usually unfair
- 0 – Always unfair

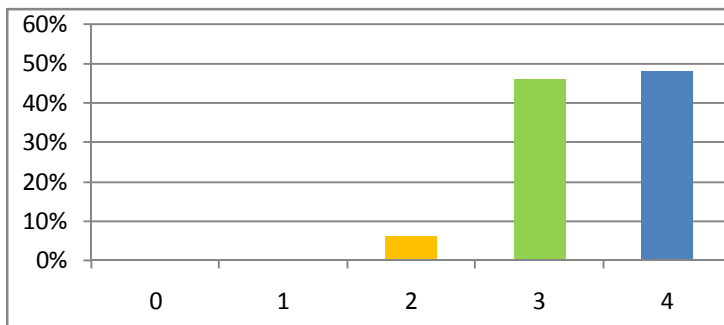
Results are as follows:



18. How do you rate the procedures involved in preparation of the examination halls, invigilation, evaluation of answer papers and arrangements for addressing examination related grievances?

- 4 – Excellent
- 3 – Very Good
- 2 – Good
- 1 – Average
- 0 – Poor

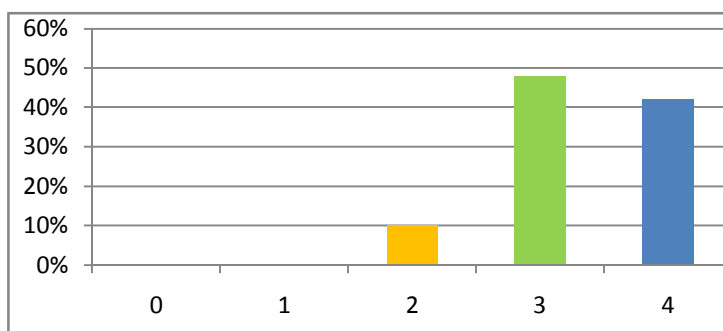
Results are as follows:



19. Do your teachers enable you to identify your strengths and weaknesses and help you to develop your strengths and overcome your weaknesses by providing timely counseling and care?

- 4 – Every time
- 3 – Usually
- 2 – Occasionally
- 1 – Rarely
- 0 – Never

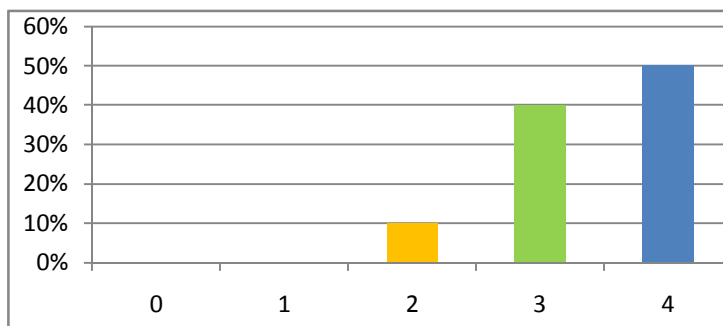
Results are as follows:



20. If you were to award rating for your institution in terms of “stars” in relation to quality of teaching-learning and evaluation, what would be your rating?

- 4 – *****
- 3 – ****
- 2 – ***
- 1 – **
- 0 – *

Results are as follows:



21. Give three suggestions to improve the overall teaching, learning and evaluation process in your Institution

- More field trips, visits to and interaction with other reputed organizations/institutions will be helpful to gather different perspective and gain professional knowledge.
- Library timings should be increased till midnight for all students.
- Handouts of lectures can be provided for references and further enhancement of information on the topic(s).